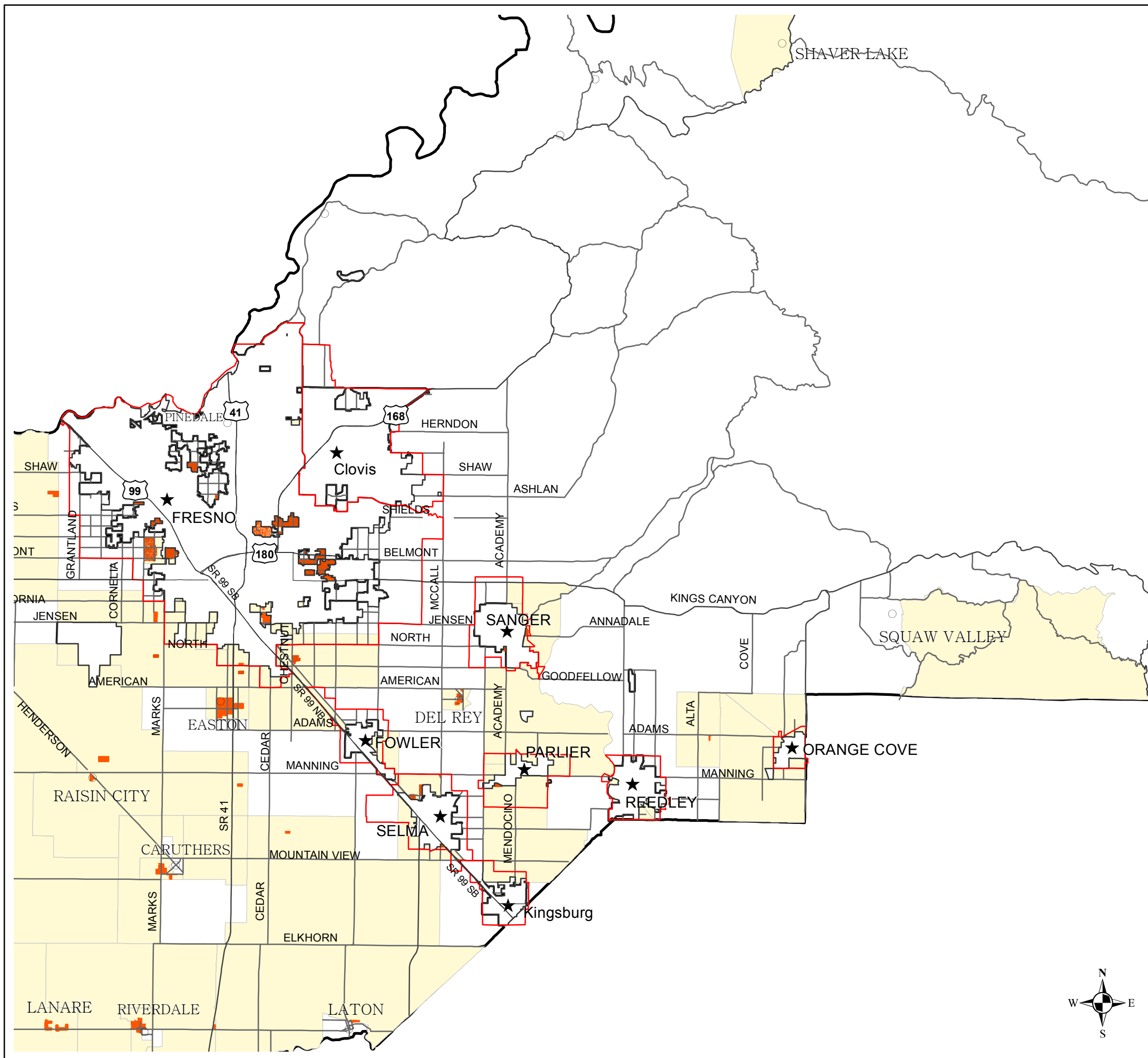


DISADVANTAGED UNINCORPORATED COMMUNITIES MAP: FRESNO COUNTY 2010 CENSUS INFORMATION US AMERICAN COMMUNITY FIVE YEAR SURVEY (CA STATEWIDE MHI - \$60,883, A MHI OF LESS THAN \$48,706 IS THE DUC THRESHOLD)

- ★ Fresno County - Cities
- Unincorporated Communities
- Spheres of Influence - Cities
- Incorporated City Boundaries
- Census Block Groups with a MHI of less than \$48,706
- Disadvantaged Unincorporated Communities



A DUC means an inhabited territory with an annual median household income that is less than 80 percent of the statewide annual MHI and as defined in Government Code sec. 56046 and Water Code sec. 79505.5. A DUC shall have at least 15 dwelling units at a density not less than one unit per acre. (LAFCo Policy - 106)

LAFCo has determined that, as of the date of the adoption of this policy, there may be a deficiency in census data to accurately assess median income in unincorporated communities.

As a result, LAFCo or its designee shall consider various sources of information in order to make a determination that a DUC exists.

Cities and special districts will be required to identify DUCs within and contiguous to their boundaries; however, LAFCo will verify all information and make independent attempts to identify DUCs using the Information Sources.

